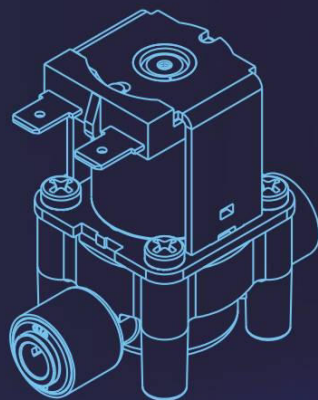


电磁阀<<< ELECTROMAGNETIC VALVE

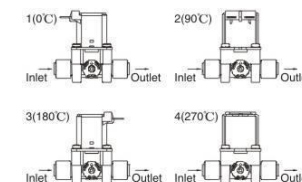
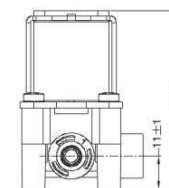
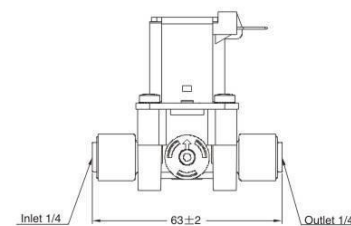


SPECIFICATION:

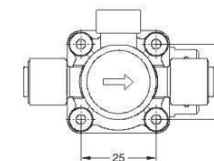
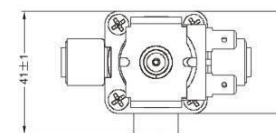
- Waste Water Electromagnetic Valve 废水电磁阀

MAIN TECHNICAL DETAILS:

- Water Pressure Range: 0.02~0.8Mpa
- Rated voltage: DC9V/DC12V/DC24V/DC36V/
AC12V/AC24V/AC110V/AC220V
- Medium temperature: 0~100℃
- Working life: ≥100,000 times
- Waste water flow rate: (150/200/300/420/550/800/1000)
±10% ml/min, at 0.42MPa water pressure



(calculation as the inlet counter-clockwise direction)



DEV01	X	X	X	X	X	X
Series	Function	product number	Coil angle	Special mark	Waste water flow rate	Rated voltage
	W Waste	02	1 0° 2 90° 3 180° 4 270°		150 550 200 800 300 1000 420 ...	DC9V AC12V DC12V AC24V DC24V AC100V DC36V AC220V

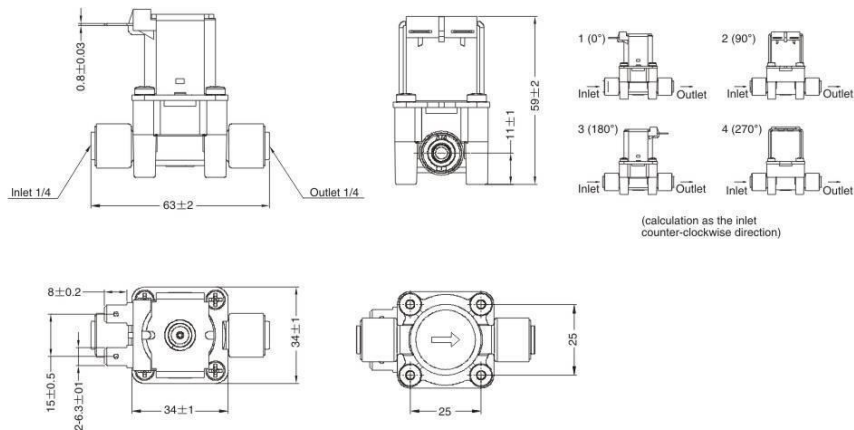


SPECIFICATION:

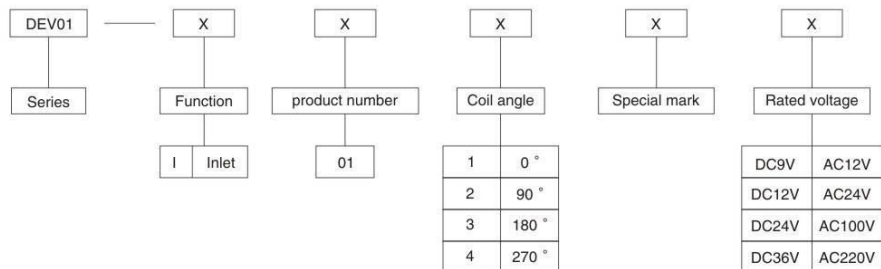
- Inlet Water Electromagnetic Valve 进水电磁阀

MAIN TECHNICAL DETAILS:

- Water Pressure Range: 0.02~0.8Mpa
- Rated voltage: DC9V/DC12V/DC24V/DC36V/
AC12V/AC24V/AC110V/AC220V
- Medium temperature: 0~100°C
- Working life: ≥100,000 times



(calculation as the inlet counter-clockwise direction)

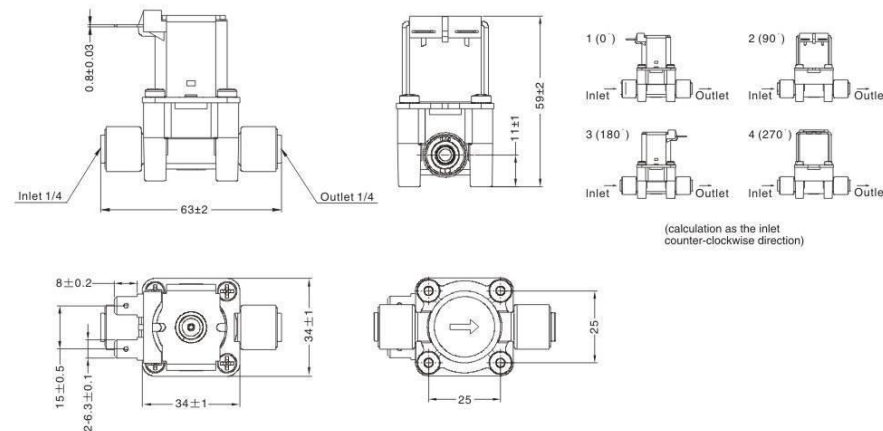


SPECIFICATION:

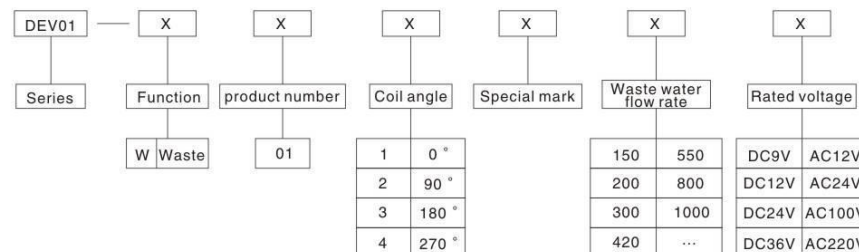
- Waste Water Electromagnetic Valve 废水电磁阀

MAIN TECHNICAL DETAILS:

- Water Pressure Range: 0.02~0.8Mpa
- Rated voltage: DC9V/DC12V/DC24V/DC36V/
AC12V/AC24V/AC110V/AC220V
- Medium temperature: 0~100°C
- Working life: ≥100,000 times
- Waste water flow rate: (150/200/300/420/550/800/1000)
±10% ml/min, at 0.42MPa water pressure



(calculation as the inlet counter-clockwise direction)



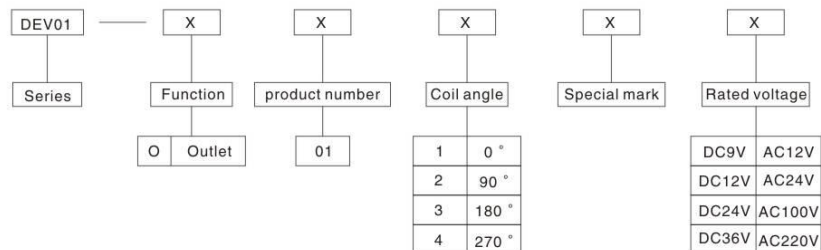
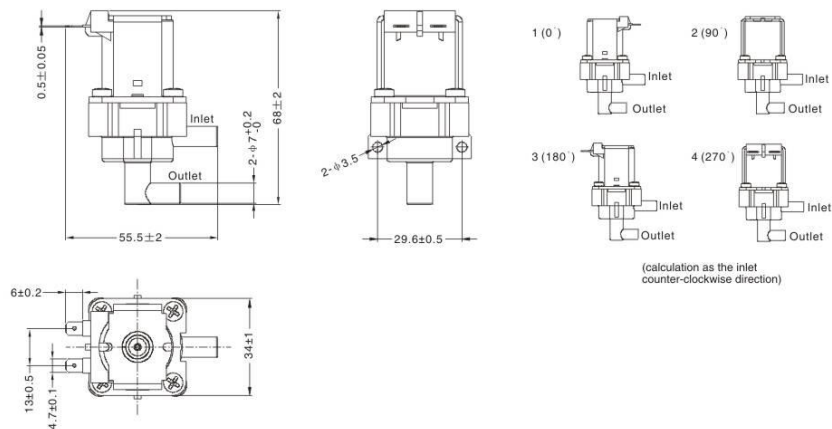


SPECIFICATION:

- Outlet Water Electromagnetic Valve 放水电磁阀

MAIN TECHNICAL DETAILS:

- Water Pressure Range: 0~0.003Mpa
- Rated voltage: DC9V/DC12V/DC24V/DC36V/
AC12V/AC24V/AC110V/AC220V
- Medium temperature: 0~100℃
- Working life: ≥100,000 times



SPECIFICATION:

- High Pressure Switch

MAIN TECHNICAL DETAILS:

- Water Pressure Range: 0.02~0.4Mpa
- Rated voltage: 250VAC/24VDC
- Medium temperature: 0~100℃
- Working life: ≥100,000 times

